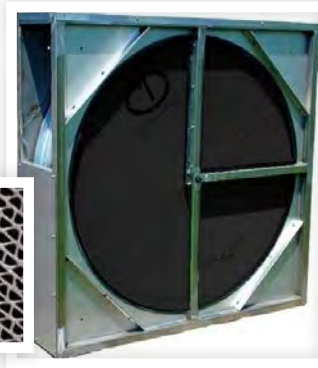
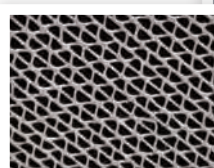


Why Buy CDI?

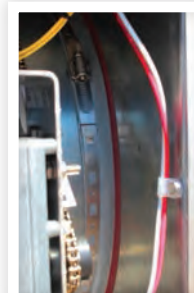
Stainless Steel Desiccant Cassette

- Industry leading 7 year prorated rotor and cassette warranty.
- "Moisture Rich" environments demand corrosion resistance.
- Washable Desiccant Rotor.
- Non-respirable.
- Smoke developed (SDI) and flame spread (FSI) ratings = 0.
- Center bearing is permanently greased.
- Bearing maintains alignment within cassette.
- Less movement for seal to "take up". Less seal wear.



Desiccant Rotor Seals: Dual-Contact, Viton

- Designed to last the life of the unit.
- Most durable seal in the industry.
- No special tools required.
- Minimizes leakage up to +/- 8" W.C. differential.



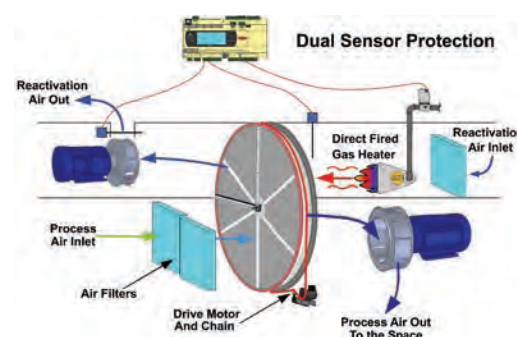
CDI Rotor Drive System

- A full-perimeter Sprocket with a #40 Molly Chain drives desiccant motor.
- Chain drive is easily removed or installed without removing the rotor.
- Drive chain, no belts.
- Simple removal of drive and rotor.
- Rotor removal through either side of AHU.



Reactivation Energy Modulation

- Reactivation Energy Input is modulated for operational and energy efficiency.
- Reactivation Input Temperature is monitored to protect rotor from overheat damage.
- As moisture drops, less energy is required to reactivate the rotor.



Microprocessor Safeguards

- Microprocessor standard controller for temperature, humidity, flow control, and safeguard functions.
- Terminal strip connection points for alarming, monitoring, with building management system communications.
- User interface standard equipment integral to the controller.
- User-friendly display is kept in the unit control panel to protect from tampering.
- Maintains a constant Burner-Output Temperature if sensor fails.
- Overheating the desiccant rotor is impossible - dual sensors protect the wheel from both sides.
- Minimizes energy by modulating as scheduled.
- Has a full-rated performance capability in cool weather.



User Interface – Standard

- An excellent tool for start-up, troubleshooting, and monitoring unit operation.
- Easy access to unit set points.
- Provides quick assessment of unit status and conditions.



Remote User Interface – Optional

- Optional, remotely located, user interface panel is available when increased accessibility is important.
- IP 65 rated remote display (can handle dust and wash down applications similar to NEMA 4X).
- Programmable to allow unit enable via remote.

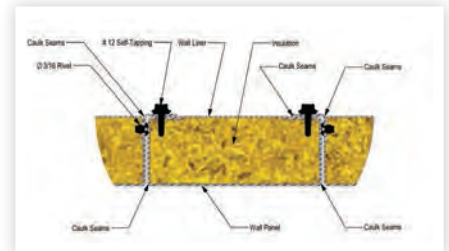
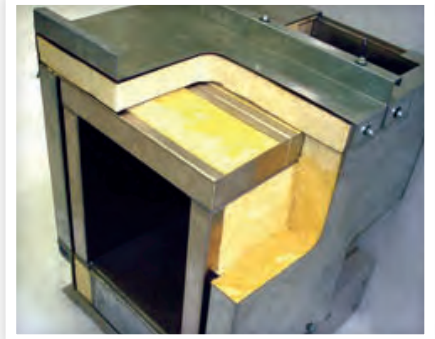


Communication Options: Compatible With The Most Common BMS Protocols

- BACnet IP - uses standard Ethernet RJ45 connector to connect to a LAN or Internet
- BACnet MS/TP RS485
- ModBus RTU RS485
- ModBus IP
- LonWorks

Exclusive NoThruMetal™ Casing Option

- CDI's NTM™ casing is truly thermally broken and has unprecedented thermal performance.
- Dramatically increases resistance to air and moisture leakage.
- Provides superior condensation control.
- Ultimate in a smooth sanitary cleanable interior surface.
- Our patented NoThruMetal design is truly a "cabinet within a cabinet".
- Injected polyurethane foam insulation R-6 per inch is offered in 2 ½", 4", and 6" thicknesses.



Doors

- Easy open quarter turn latch doors, not bolted panels.
- Single point latch for tall doors for easy opening.
- Door holder restraint to hold electrical and gas doors open.
- Roller latches.



Blowers

- Airfoil, non-overloading rated for total static pressure.
- Direct drive fans to eliminate belts and external bearings wherever possible.
- Piezometer Ring to measure flow.



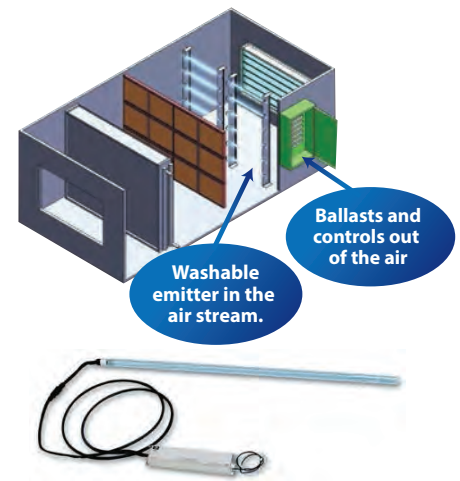


Climate by Design
INTERNATIONAL

sales@cdihvac.com | www.cdihvac.com
507.451.2198 | Owatonna, MN 55060

Superior UVGI Design Option

- CDI UVGI allows wash down of the airstream and components without removal of UV emitters.
- Ballasts are out of the airstream.
- Unique and exclusive water and dust tight Teflon coated shatter proof emitter lamp.
- Single electrical connection utilizes our exclusive end seal which allows the entire unit assembly to be washed down with emitters in place.
- Offers a true 2-year lamp which retains 80% initial output over its 17,000 hour life.



ETL Certification

- Complete unit is ETL listed and approved.
- ETL-C listings are provided for Canada.
- CE approvals.



CDI Dedicated Factory-Based Service Department

- Factory trained technicians perform startups.
- Unit operation training available.
- On-site installation supervision available.
- 24/7 customer service hotline available.
- Standard 2 year parts warranty on all units.
- Electronic O & M's.
- Critical Care Program.
- Services range from preventative maintenance to prescriptive plans for a specific application.



More Reasons to Buy CDI

- Manufactured in the USA.
- Proven HVAC solutions since 1991.
- Experience with highly customized units as well as standard.
- CDI Educational Institute featuring Dr. Dry – providing free webinars on desiccant dehumidification and applications.

